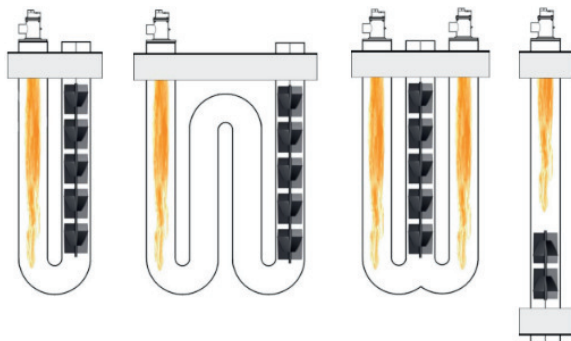


Radiant Tube Inserts

Maximize:

PSNERGY's patented Radiant Tube Inserts are the simplest way to maximize furnace efficiency and energy to the load.

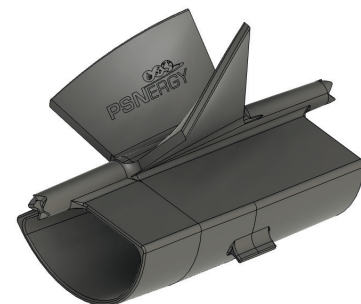
- Silicon Carbide composition results in 98% emissivity
- Patented design absorbs exhaust heat and radiates energy back into the load
- Open cross section allows air flow, minimizing back pressure on the combustion system
- Easy retrofit installation minimizes downtime
- Applicable in horizontal and vertical tube configurations, recuperated or non-recuperated



Benefits:

Increase furnace efficiency and temperature uniformity while reducing emissions output and gas consumption.

- Increase efficiency up to 20%
- Improve throughput and radiant tube life
- Reduce fuel consumption
- Reduce emissions (CO & NOx) per ton
- Enhance quality with uniform heating
- Decrease downtime with faster heat recovery
- Reduce thermal stress and tube cracking



Your Experts in Combustion Technology

Reducing Emissions • Saving Energy • Worldwide